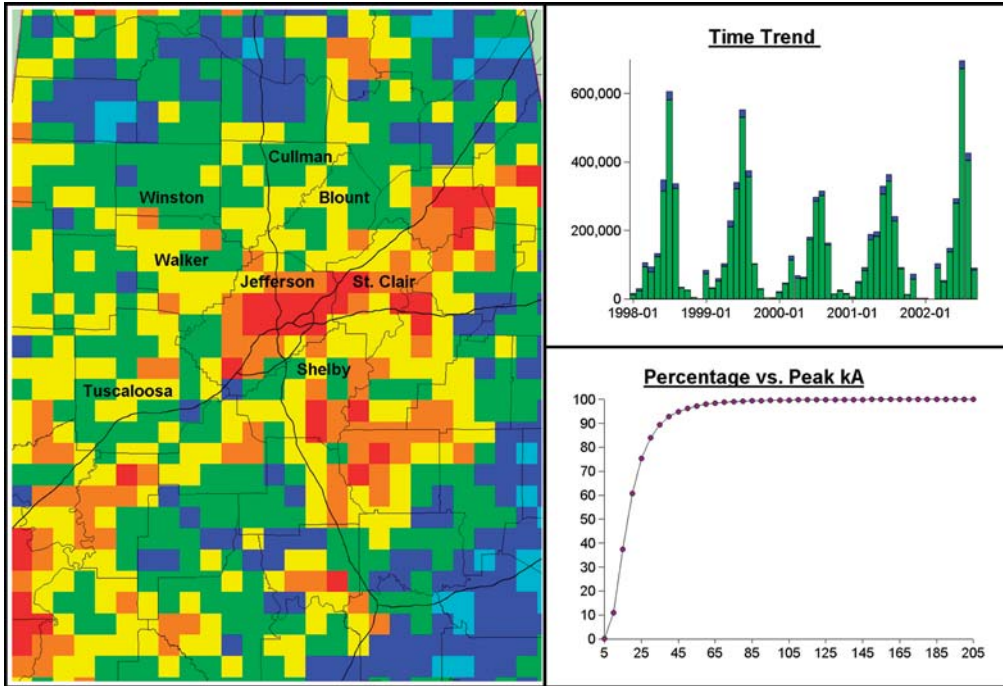


Vaisala FALLS® Fault Analysis and Lightning Location System™



Use Vaisala FALLS® engineering analysis tools to determine lightning risk and to intelligently design system protection.

IMPROVE RELIABILITY, INVEST MORE WISELY WITH VAISALA FALLS®

Vaisala FALLS® is GIS-based (geographic information system) software that queries recorded lightning data relevant to your assets and event times, then automatically maps, plots, and graphs the results for engineering analysis. Companies use Vaisala FALLS® with historic lightning data to quantify lightning problems pertinent to specific assets and facilities and to specify tailored recommendations for improvement.

Vaisala FALLS® is a valuable, in-depth investigation tool used by:

- Reliability Engineers
- Power Quality Engineers
- Planning and Design Engineers
- Construction and Maintenance Supervisors
- Facilities Planning and Asset Managers
- Account Managers
- Regulatory Compliance Managers
- Operations Managers
- Emergency Response Managers
- Safety Managers

VAISALA FALLS® FEATURES AND BENEFITS

- Support intelligent design and engineering
- Import and export maps to complement SCADA and mapping systems with lightning analysis
- Correlate faults, interruptions or system failures with specific lightning strikes
- Locate weaknesses and evaluate performance related to lightning
- Recommend and prioritize upgrades and maintenance
- Make targeted improvements
- Assess the effectiveness of your protection schemes
- Benchmark system performance relative to actual exposure to lightning.
- Determine yearly, monthly, and weekly variations in local lightning
- Defend against lightning damage claims

Technical data

System Configuration

Vaisala FALLS® is a client-server application compatible with Windows® NT, 98, 2000 and XP

Single PC, multiple PC or local server configurations available

Contact your sales representative for recommended system configurations along with turnkey installations that include workstations, printers, communications and data services

Lightning data source

Lightning data from Vaisala's U.S. National Lightning Detection Network® or Canadian Lightning Detection Network

Lightning data from any lightning detection network using a Vaisala central processor and a Vaisala DA2000 module

Support Services

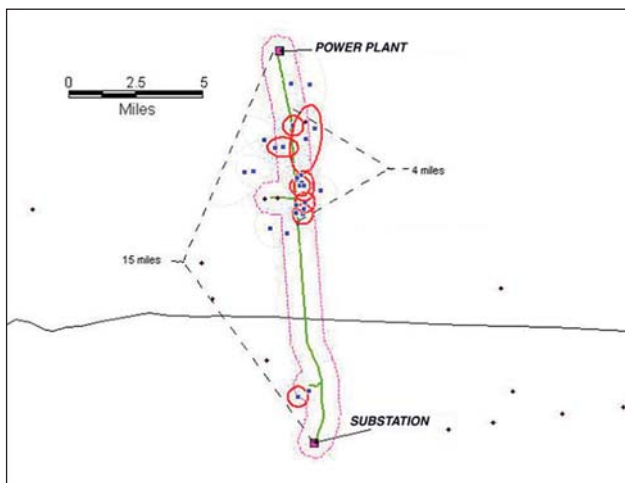
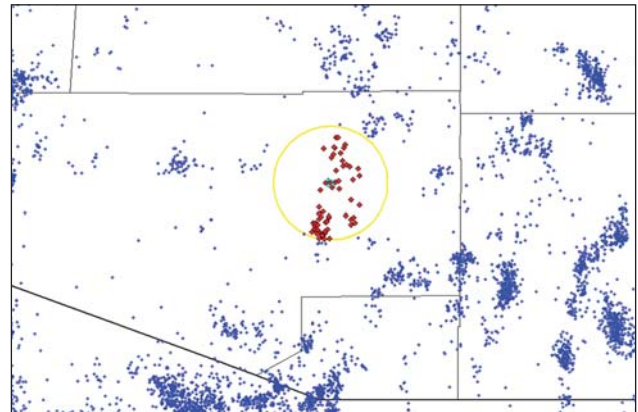
Vaisala FALLS® software training can be tailored to your specific needs. Technical support is available online and via telephone, e-mail and fax. Contact your Vaisala sales representative for details.

Annual VAISALA FALLS® Users Group Meeting

Vaisala FALLS® users meet every year at the FALLS® User Group Meeting, sponsored by Vaisala. Vaisala FALLS® users and prospective users are invited to join other users to discuss real-world applications and to review case studies that assist users in optimizing their FALLS® software throughout their organizations.

Regional and Small Area Exposure Analysis

- Regional and local lightning density analysis
- Reveal geographic hot spots
- Show yearly variations
- Statistical analysis of lightning typical for your region or asset
- Rank assets by amount and intensity of lightning exposure



Reliability Analysis

- Map event-specific lightning analysis in near real-time
- Locate poorly performing line segments or system weaknesses
- Pinpoint lightning contact points within specific storms
- Validate lightning protection design



Vaisala Inc.
Tucson Operations
2705 E. Medina Road
Tucson, AZ 85706, USA
Tel. +1 520 806 7300
Fax +1 520 741 2848
thunderstorm.sales@vaisala.com

Vaisala Oyj
P.O. Box 26
FIN-00421 Helsinki
Finland
Tel. +358 9 894 91
Fax +358 9 8949 2227

For more detailed contact information and for other Vaisala locations visit us at: www.vaisala.com